

THE FILSON HISTORICAL SOCIETY'S EXPANSION-

EXPLORING THE INTERIORS

BY ROBERTO DE LEON, JR., AIA, LEED AP
AND M. ROSS PRIMMER, AIA - PRINCIPALS,
DE LEON & PRIMMER ARCHITECTURE WORKSHOP

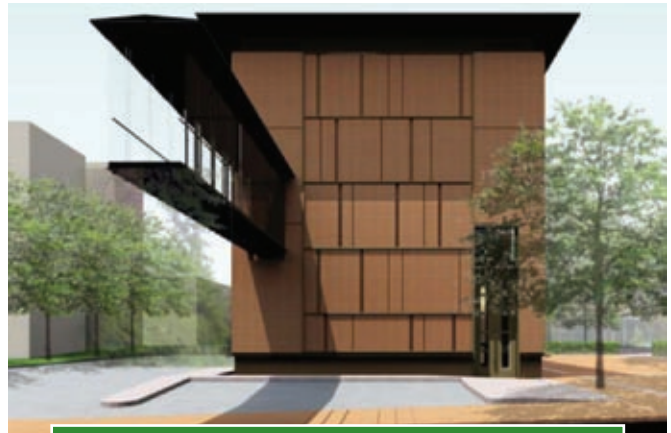
.....

This article is the third in a series centered on
The Filson Historical Society's expansion.

All images are from De Leon & Primmer Architecture Workshop



CARRIAGE HOUSE WITH CONNECTOR BRIDGE



EAST ELEVATION WITH CONNECTOR BRIDGE

ARCHIVAL STORAGE

The new multi-level Archival Storage is directly connected to the Scholarly Research area (in the Ferguson Mansion) via a glass connector bridge. Originally hidden from view, historical manuscripts and artifacts will be visible to visitors from within the new addition. Changing displays will be incorporated into all public spaces.



ARCHIVAL STORAGE RENDERING

STAIRCASE

The historical precedent of elaborately carved oak staircases common to the circa-1890 neighborhood mansions is reinterpreted through a layering of curving wood veneer planes. Using sweetgum veneer (a native wood species), the staircase is expressed as a wooden ribbon that ascends to the community event space overlooking the city.



STAIRCASE CARVING DETAIL



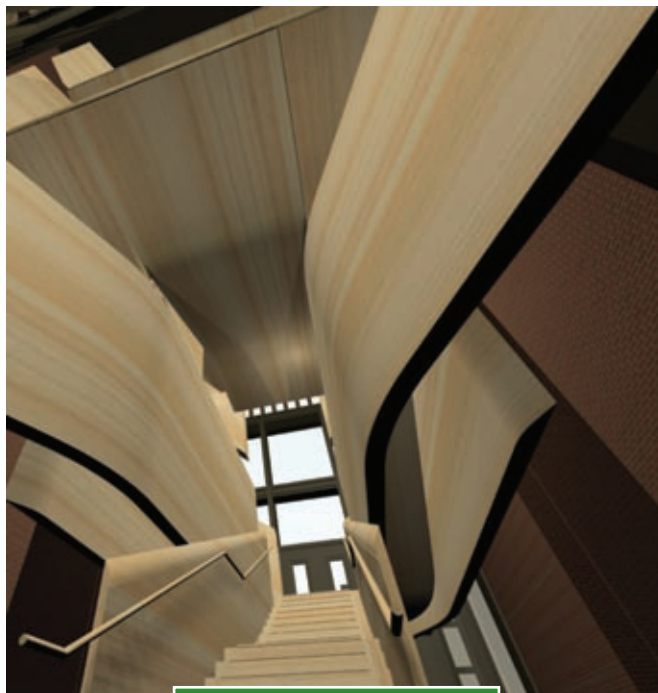
PEELING BIRCH BARK



WOOD VENEER FLITCH SAMPLES



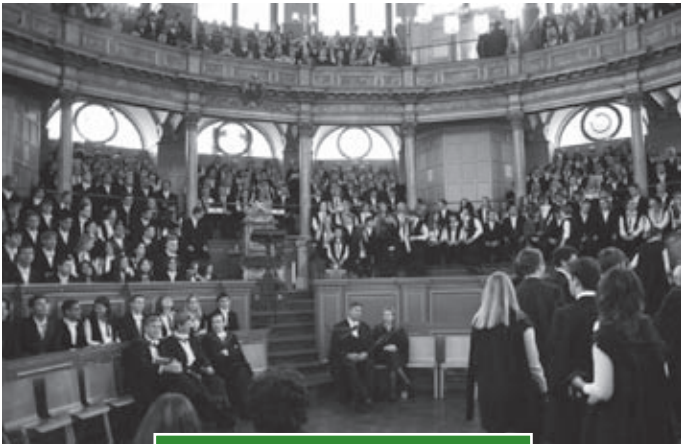
WOOD VENEER MOCK-UP



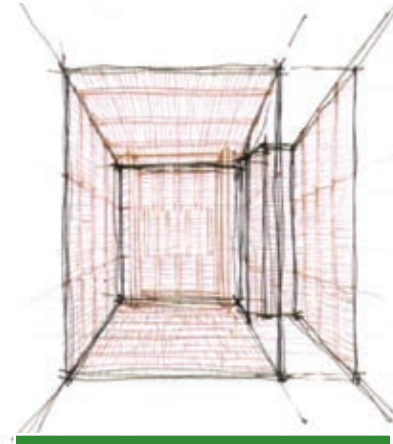
STAIRCASE RENDERING

LECTURE HALL

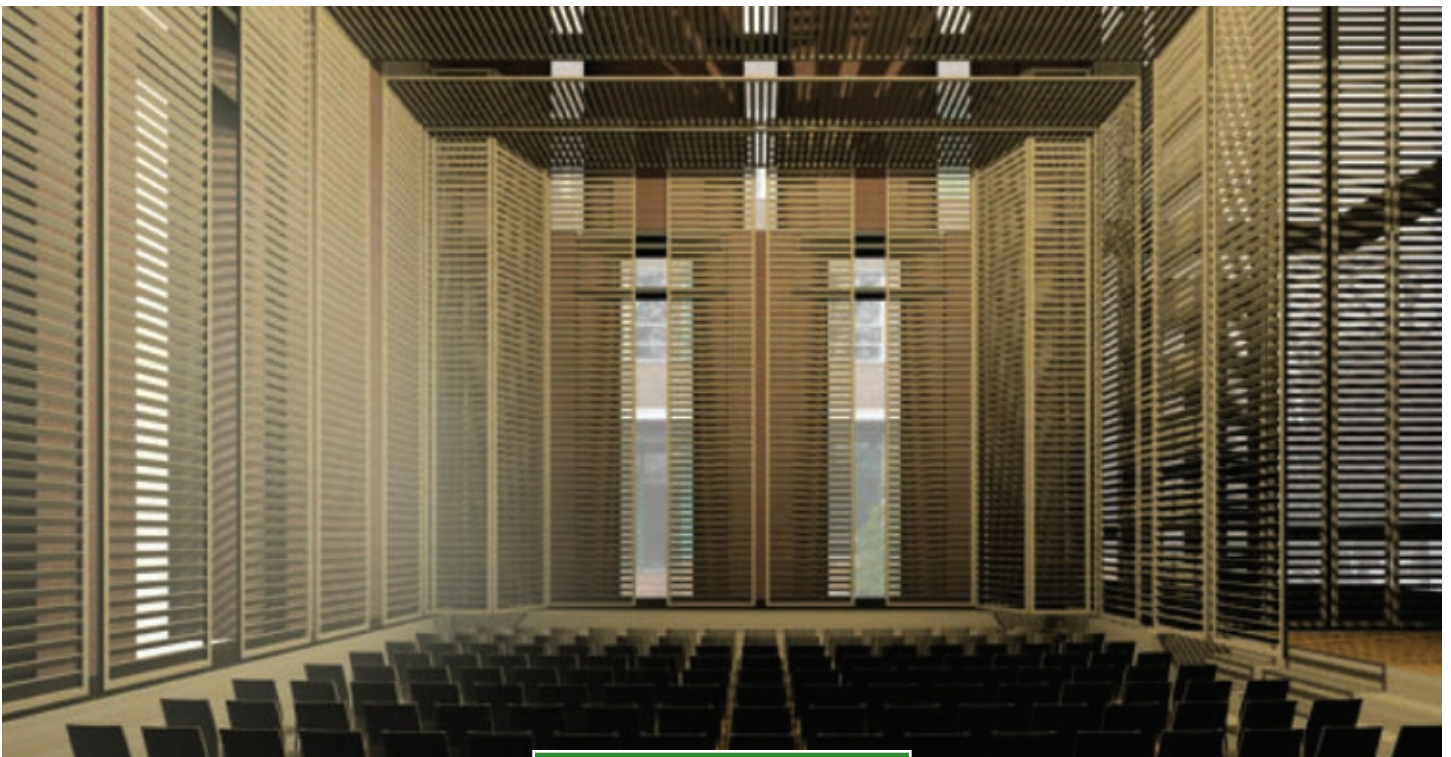
Lined in movable wood louver paneling, the Lecture Hall can be easily adapted to a variety of speaking and event configurations. Alluding to wood coffering and paneling in traditional lecture halls, the adjustable louver panels reinforce an open, spatial quality common to southern verandas.



OXFORD LECTURE HALL



DEVELOPMENT SKETCH



LECTURE HALL RENDERING